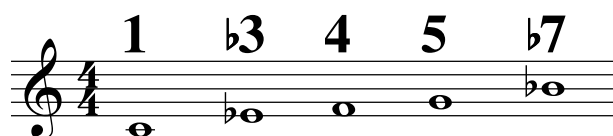


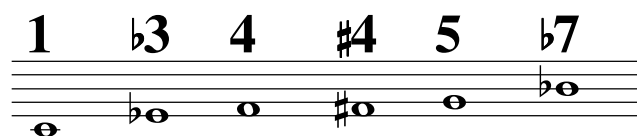
Blues Scales (Key of C)

1/24/2013

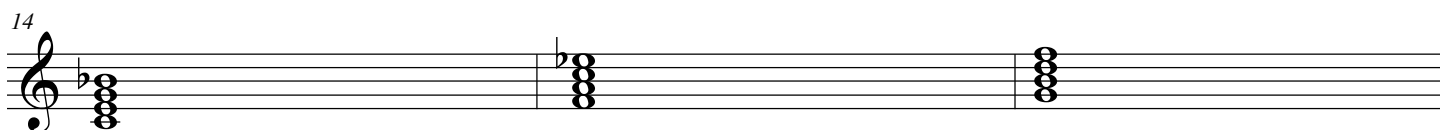
Minor Pentatonic



Blues Scale



These scales are the skeletal building blocks for creating melodies in blues. But how do they 'work' across the different chords in a simple 12 bar chord progression? Consider for your musical pleasure the notes of the seventh chords in a 12 bar blues in the key of C.



For the I7 chord (C7) three of the notes are common: 1, 5, b7

A different set of 3 notes are common to the IV7 (F7) chord: 4, 1, b3

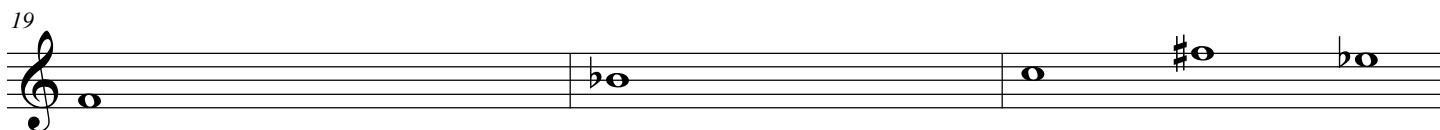
For the V7 chord (G7) only 2 notes are common: 4 and 5

Any of the scale notes will work as riffs but some of these notes are best avoided as 'landing'/'target' notes. In general:

chord tones are always safe landing/target notes -- soothing.

Notes that are 1/2 step above a chord tone are **not** good landing/target notes -- uncomfortably harsh

The remaining notes can add some nice "bite".

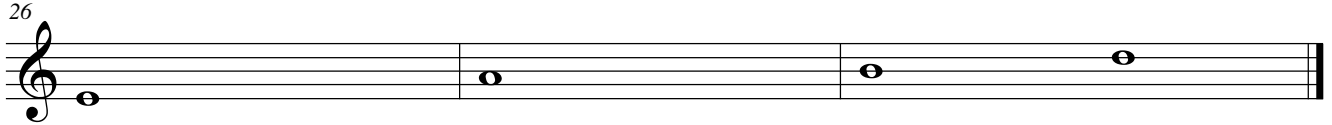


Not a good note to stop on while we're on the I chord

Not a good note to complete a lick when on the IV chord

These three notes are crummy landing notes for a phrase while we're in a V chord

But wait! There's more. **Any** of the chord notes are wonderful notes to play and use as landing notes while we're soloing; **particularly** the chord tones **not** in the blues scales



Good note while
soloing over the I
chord

Good note while
soloing over the
IV chord

Both good notes while
soloing over the V chord